



# SOLATUBE®

DAYLIGHTING SYSTEMS

## Installation Instructions

Solatube Ø 35 cm round  
AuroraGlo Ceiling diffuser

*Enjoy daylight*

# Contents

<b>1. Productoverzicht.....</b>	<b>3</b>
<b>1.1 Parts .....</b>	<b>3</b>
<b>2.1 Step 1 – Install the fixing ring .....</b>	<b>4</b>
<b>2.2 Step 2 – Mark the fixing holes.....</b>	<b>4</b>
<b>2.3 Step 3 – Install the fixing ring .....</b>	<b>5</b>
<b>2.4 Step 4 – Install the ceiling diffuser .....</b>	<b>5</b>

## Versie

04-08-2020

## Safety Information

- Always observe the safety instructions for the materials and tools to be used.
- Always wear the appropriate personal protective equipment (gloves, safety goggles etc.)
- We would suggest that any roof works is completed by an experienced roofer.
- Always have any electrical works carried out by a certified electrician.
- Please note that the installation works is carried out at your own risk.

## Guarantee

Non-electrical Solatube® components are covered by a 10 year manufacturer's warranty against any manufacturing defects. Please retain the original proof of purchase to validate the product warranty. Any costs associated to the installation of any replacement parts covered under the warranty remain at the expense of the purchaser. Our terms and conditions are available upon request.

## Disclaimer

Techcomlight Limited expressly disclaims any liability for any unexpected additional expense arising as a result of condensation or any water damage resulting from condensation, installation not in accordance with Techcomlight Limited's installation guide/s or any other external influences beyond the control of Techcomlight Limited. Techcomlight cannot be held liable for damage to structures caused as a result of making openings and installing Solatube® systems. Techcomlight assumes no responsibility or obligation for the failure of an architect, contractor, installer or building owner to comply with all applicable laws, ordinances, building codes, energy codes, fire and safety codes and requirements, and adequate safety measures.

Installation instructions reserved. No rights can be derived from this publication.

## 1. Product Overview



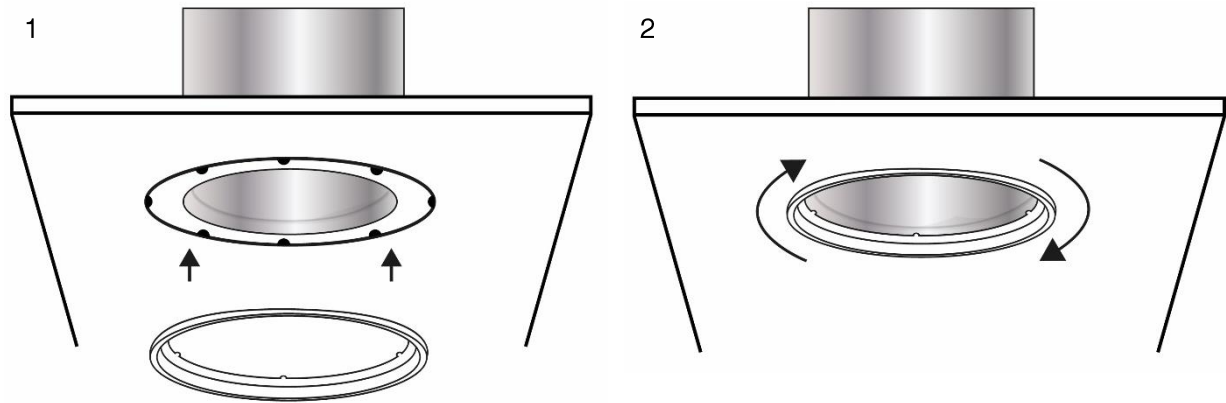
### 1.1 Parts

- 1. AuroraGlo ceiling diffuser
- 2. Fixing ring
- 3. 4 x Ceiling fixings

## 2. Installation Steps

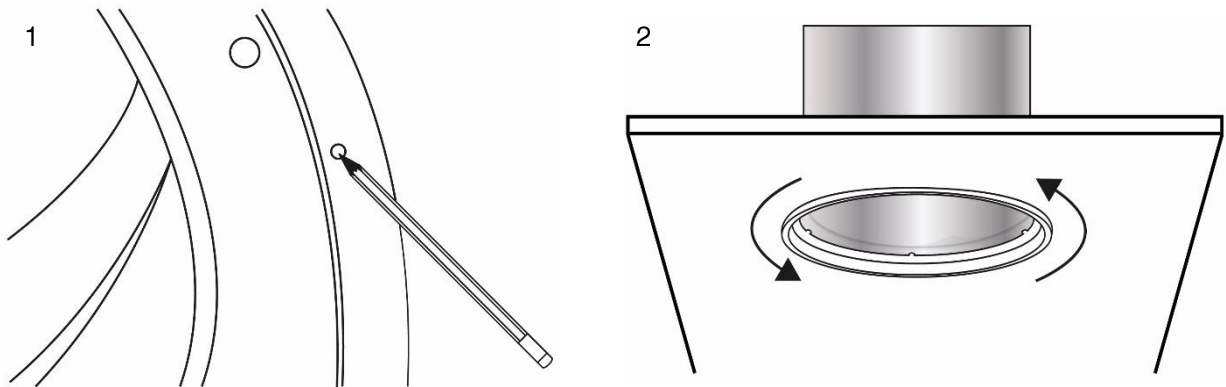
### 2.1 Step 1 – Install the fixing ring

Align the fixing ring on to the ceiling ring (already installed during the installation of the Solatube) and twist it in a clockwise direction until it clicks into place.



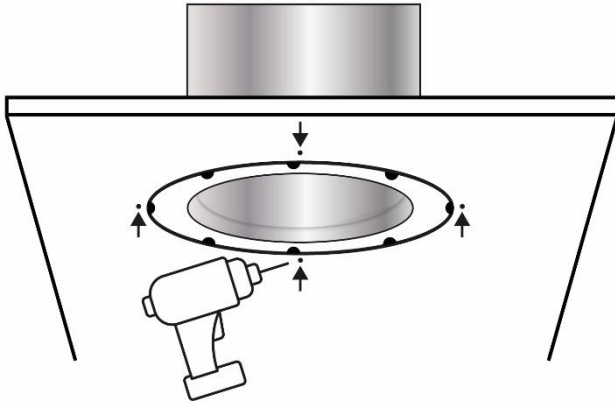
### 2.2 Step 2 – Mark the fixing holes

Mark the four screw holes onto the ceiling and then remove the fixing ring by turning it counterclockwise.



### 2.3 Step 3 – Install the fixing ring

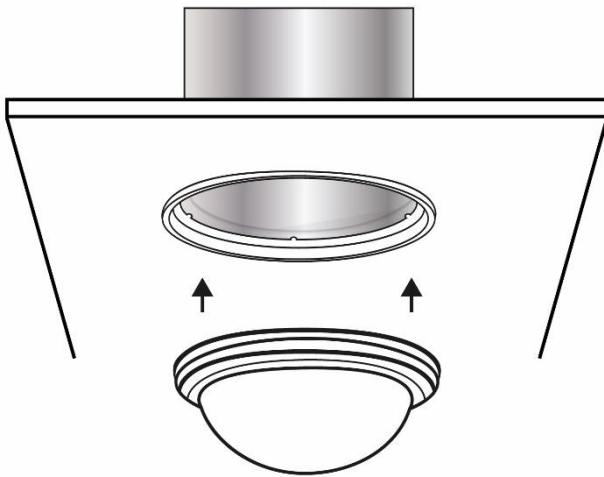
Predrill the four holes marked. If necessary, place ceiling plugs in to the pre-drilled holes. Then replace the fixing ring and screw it to the ceiling with four screws (not included).



---

### 2.4 Step 4 – Install the ceiling diffuser

Align the ceiling diffuser up over the fixing ring. Tighten the carrier screws with a screwdriver until the ceiling diffuser fits up against the ceiling.



---

**This completes the installation of the your Solatube ceiling diffuser.**

